

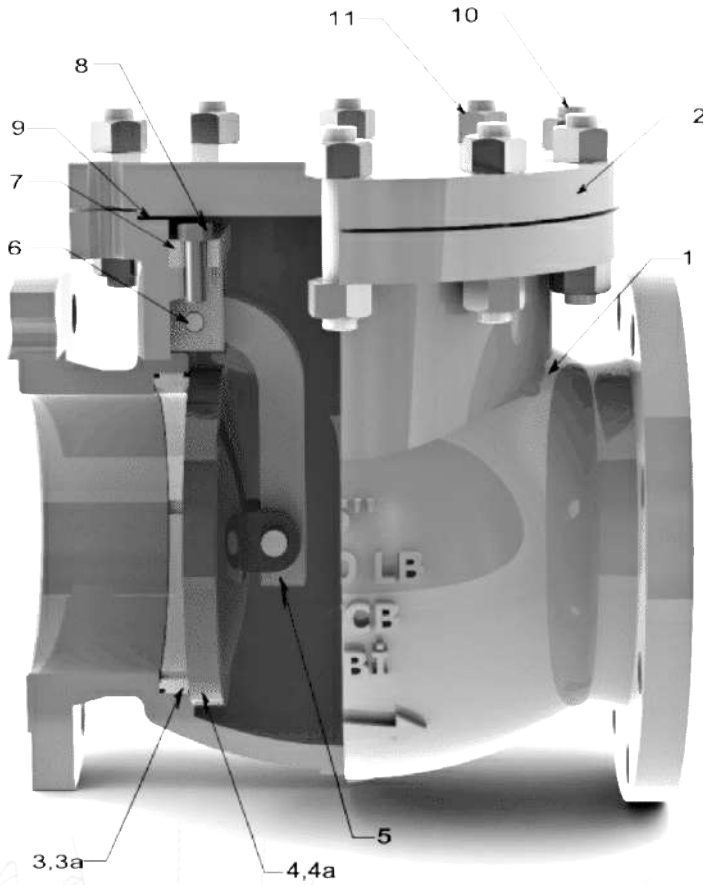


CHECK VANALAR  
/ CHECK VALVES



Çelik Döküm Check Vana / Cast Steel Check Valve  
Dövme Çelik Check Vana / Forged Steel Check Valve  
Bronz Döküm Check Vana / Cast Bronze Check Valve

# 150 CLASS CAST STEEL CHECK VALVES



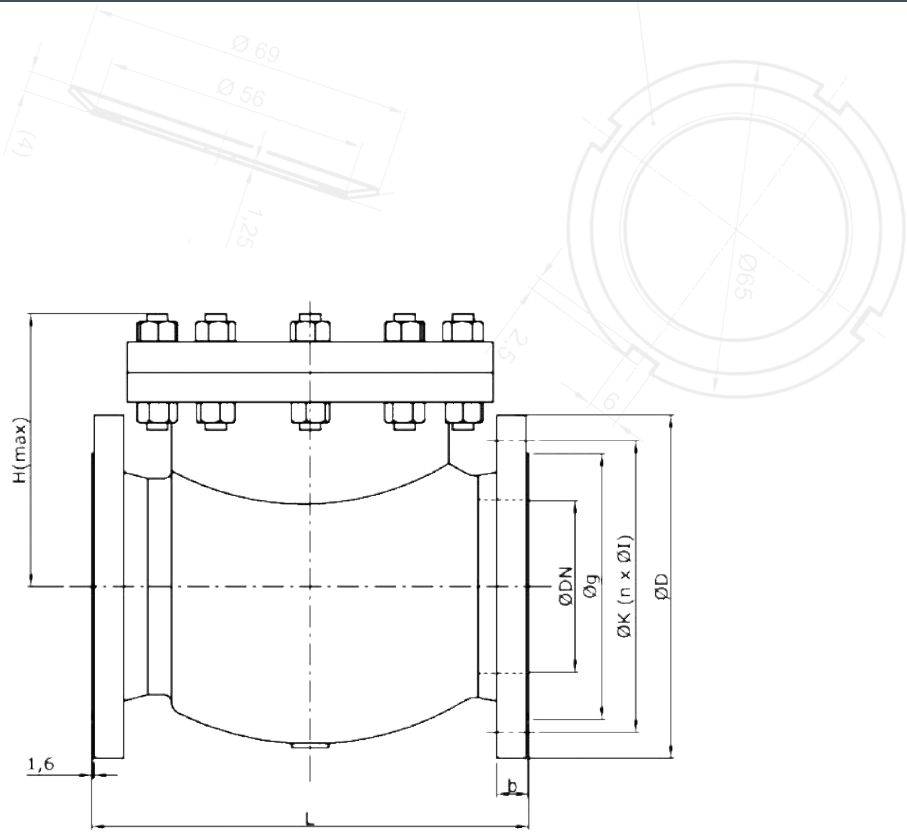
- FLGD, Bolted Bonnet
- Outside Screwed & Yoke , Rising Stem
- Design Standard: API 6D & ASME B16.34
- Face to Face Standard: ANSI B 16.10
- Flange Standard : ANSI B 16.5 & ASME B16.47
- Rating: -29 +38° C at 20 Bar, Max.425° C at 6 Bar
- Test: Shell 30 Bar, Closure 22 Bar , Air 6 Bar

Item No	Part Name	Material
1	Body*	Cast Steel
2	Bonnet*	Carbon Steel
3	Body Seat Ring	Carbon Steel
3a	Body Seat Face	Stainless Steel
4	Disc*	Cast Steel
4a	Disc Seat Face	Stainless Steel
5	Disc Arm*	Cast Steel
6	Disc Pin	Stainless Steel
7	Disc Hinge*	Cast Steel
8	Bolt	Stainless Steel
9	Gasket	SWG
10	Stud Bolt	Cr.Mo Steel
11	Nut	Carbon Stell

\*Materials can be stainless steel or alloy steel

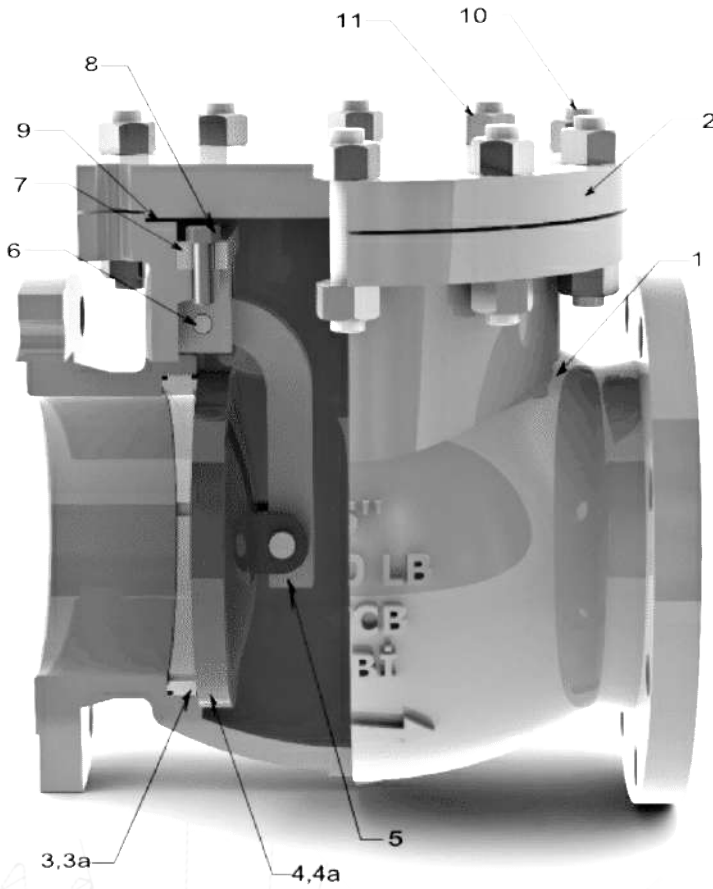
\*Malzemeler paslanmaz çelik veya alaşımlı çelik olabilir

# 150 CLASS CAST STEEL CHECK VALVES



Dimensions & Weight												
NPS	DN	ØD	b	Øg	ØK	ØI	n	Bolt	L	H(max.)	Wt	
inc.	mm	mm	mm	mm	mm	mm	no	inc. mm	mm	mm	Kg	
2	50	153	16	92	121	19	4	5/8 M16	203	210	20	
2 ½	65	178	18	105	139,7	19	4	5/8 M16	216	235	23	
3	80	191	19	127	152	19	4	5/8 M16	241	245	33	
4	100	229	24	157	191	19	8	5/8 M16	292	260	51	
5	125	254	24	186	216	22	8	¾ M20	330	290	67	
6	150	280	26	216	241	22	8	¾ M20	356	320	87	
8	200	343	29	270	299	22	8	¾ M20	495	370	142	
10	250	407	30	324	362	26	12	7/8 M24	622	410	245	
12	300	483	32	381	432	26	12	7/8 M24	699	430	350	
14	350	534	35	413	476	29	12	1 M27	787	500	440	
16	400	597	37	470	540	29	16	1 M27	864	530	590	
18	450	635	40	534	578	32	16	1 1/8 M30	978	600	850	
20	500	699	43	584	635	32	20	1 1/8 M30	978	660	910	
24	600	813	48	692	749	35	20	1 1/4 M33	1295	730	1600	
28	700	1060	57	908	978	41	28	1 1/4 M33	1448	950	1950	
30	750	1170	62	1022	1086	41	28	1 1/4 M33	1524	1040	2500	
32	800	1060	57	908	978	41	28	1 1/2 M39	1524	1100	3000	
36	900	1170	62	1022	1086	41	32	1 1/2 M39	1956	1200	3800	
42	1050	1345	67	1194	1257	42	36	1 1/2 M39		1350	4500	
48	1200	1510	70	1359	1422	42	44	1 1/2 M39		1500	4850	

# 300 CLASS CAST STEEL CHECK VALVES



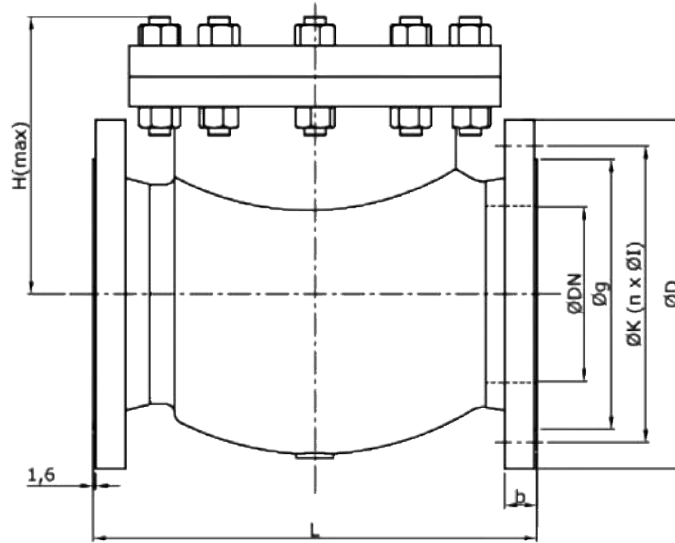
- Swing Type, Bolted Bonnet
- Design Standard: API 6D & ASME B16.34
- Face to Face Standard: ANSI B 16.10
- Flange Standard : ANSI B 16.5 & ASME B16.47
- Rating: -29 +38° C at 51 Bar, Max.425° C at 29 Bar
- Test: Shell 77 Bar, Closure 56 Bar , Air 6 Bar

Item No	Part Name	Material
1	Body*	Cast Steel
2	Bonnet*	Carbon Steel
3	Body Seat Ring	Carbon Steel
3a	Body Seat Face	Stainless Steel
4	Disc*	Cast Steel
4a	Disc Seat Face	Stainless Steel
5	Disc Arm*	Cast Steel
6	Disc Pin	Stainless Steel
7	Disc Hinge*	Cast Steel
8	Bolt	Stainless Steel
9	Gasket	SWG
10	Stud Bolt	Cr.Mo Steel
11	Nut	Carbon Stell

\*Materials can be stainless steel or alloy steel

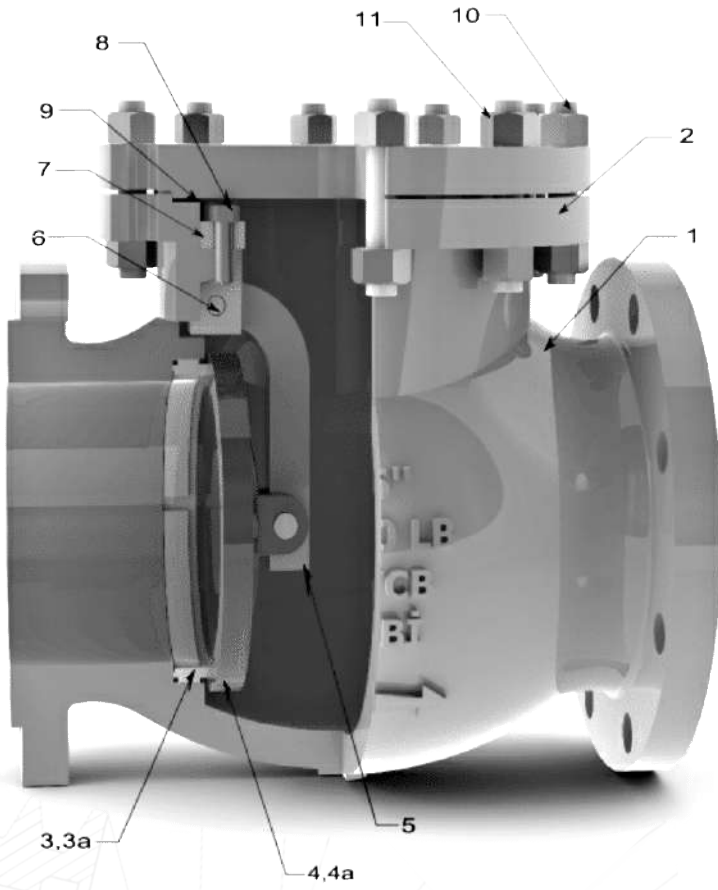
\*Malzemeler paslanmaz çelik veya alaşımli çelik olabilir

# 300 CLASS CAST STEEL CHECK VALVES



Dimensions & Weight												
NPS	DN	ØD	b	Øg	ØK	Øl	n	Bolt		L	H(max.)	Wt
inc.	mm	mm	mm	mm	mm	mm	no	inc.	mm	mm	mm	Kg
2	50	165	23	92	127	19	8	5/8	M16	268	220	22
2 ½	65	191	25	105	149	22	8	3/4	M20	292	240	26
3	80	210	29	127	168	22	8	3/4	M20	318	260	41
4	100	254	32	157	200	22	8	3/4	M20	356	275	59
5	125	280	35	186	235	22	8	3/4	M20	400	300	76
6	150	318	37	216	270	22	12	3/4	M20	445	330	110
8	200	381	41	270	330	26	12	7/8	M24	533	380	221
10	250	445	48	324	387	29	16	1	M27	622	430	350
12	300	521	51	381	451	32	16	1 1/8	M30	711	520	508
14	350	585	54	413	514	32	20	1 1/8	M30	838	540	600
16	400	648	57	470	572	35	20	1 1/4	M33	864	590	810
18	450	711	61	534	629	35	24	1 1/4	M33	978	670	
20	500	775	64	584	686	35	24	1 1/4	M33	1016	710	1480
24	600	915	70	692	813	41	24	1 1/2	M39	1346	800	

# 600 CLASS CAST STEEL CHECK VALVES



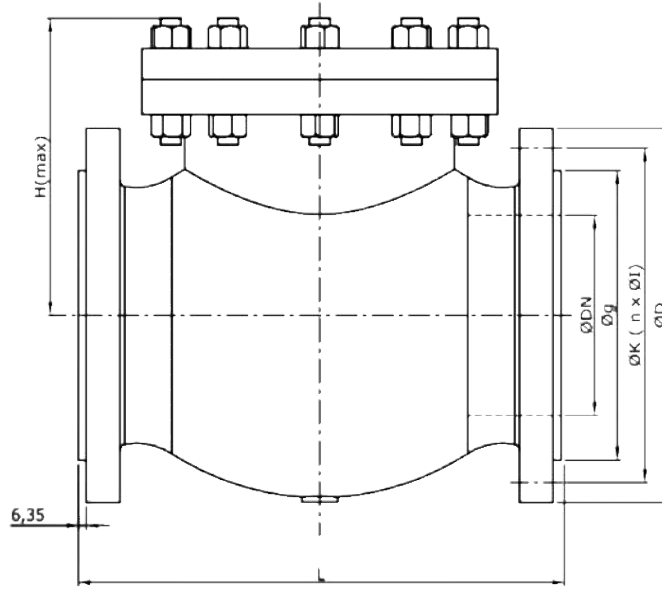
- Swing Type, Bolted Bonnet
- Design Standard: API 6D & ASME B16.34
- Face to Face Standard: ANSI B 16.10
- Flange Standard : ANSI B 16.5 & ASME B16.47
- Rating: -29 +38° C at 102 Bar, Max.425° C at 58 Bar
- Test: Shell 153 Bar, Closure 113 Bar , Air 6 Bar

Item No	Part Name	Material
1	Body*	Cast Steel
2	Bonnet*	Carbon Steel
3	Body Seat Ring	Carbon Steel
3a	Body Seat Face	Stainless Steel
4	Disc*	Cast Steel
4a	Disc Seat Face	Stainless Steel
5	Disc Arm*	Cast Steel
6	Disc Pin	Stainless Steel
7	Disc Hinge*	Cast Steel
8	Bolt	Stainless Steel
9	Gasket	SWG
10	Stud Bolt	Cr.Mo Steel
11	Nut	Carbon Stell

\*Materials can be stainless steel or alloy steel

\*Malzemeler paslanmaz çelik veya alaşımlı çelik olabilir

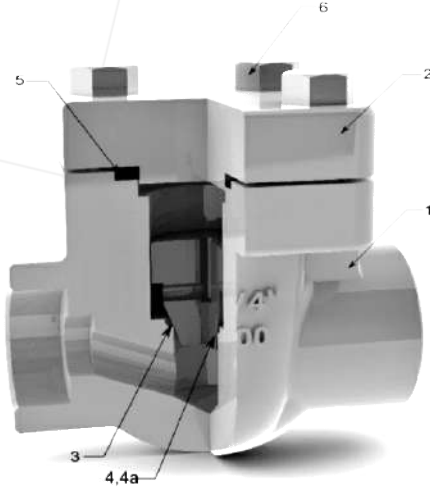
# 600 CLASS CAST STEEL CHECK VALVES



Dimensions & Weight												
NPS	DN	ØD	b	Øg	ØK	Øl	n	Bolt		L	H(max.)	Wt
inc.	mm	mm	mm	mm	mm	mm	no	inc.	mm	mm	mm	Kg
2	50	165	26	92	127	19	8	5/8	M16	292	250	24
3	80	210	32	127	168	22	8	3/4	M20	356	320	60
4	100	273	38	157	216	26	8	7/8	M24	432	375	115
6	150	356	48	216	292	29	12	1	M27	559	485	242
8	200	419	56	270	349	32	12	1 1/8	M30	660	510	395
10	250	508	64	324	432	35	16	1 1/4	M33	787	520	570
12	300	559	67	381	489	35	20	1 1/4	M33	838	530	716
14	350	603	70	413	527	38	20	1 3/8	M36	889	580	950
16	400	686	76	470	603	41	20	1 1/2	M39	991	720	1300
18	450	743	83	534	654	45	20	1 5/8	M42	1092	800	1960
20	500	813	89	584	724	45	24	1 5/8	M42	1194	860	2530
24	600	940	102	692	838	51	24	1 7/8	M48	1397	935	3450



# 800 CLASS FORGED STEEL CHECK VALVES

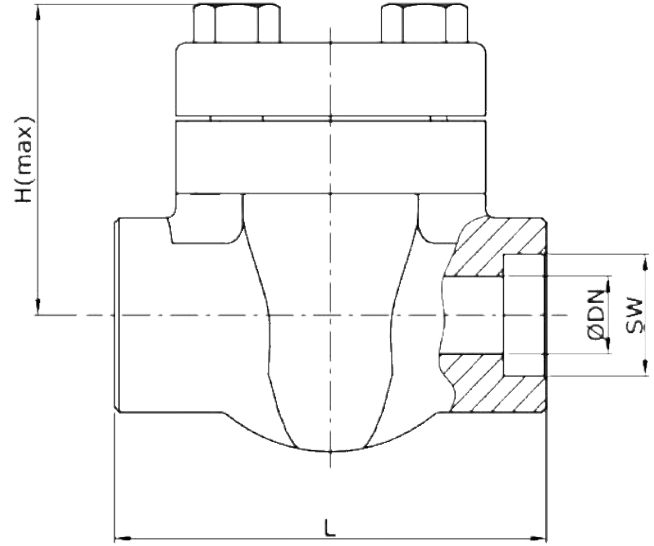


- Swing Type, Bolted Bonnet
- Design Standard: API 6D & ASME B16.34
- Rating: -29 +38° C at 140 Bar, Max.425° C at 76 Bar
- Test: Shell 211 Bar, Closure 155 Bar , Air 6 Bar

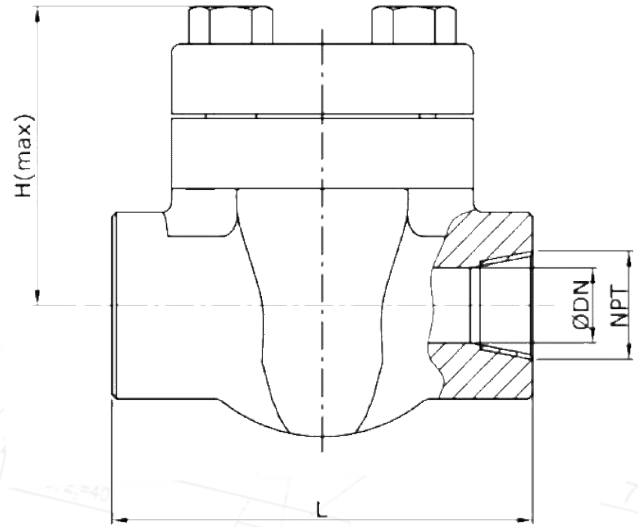
Item No	Part Name	Material
1	Body*	Forged Steel
2	Bonnet*	Forged Steel
3	Body Seat Face	Stainless Steel
4	Disc	Carbon Steel
4a	Disc Seat Face	Stainless Steel
5	Gasket	SWG
6	Bolt	Cr.Mo Steel

\*Materials can be stainless steel or alloy steel  
 \*Malzemeler paslanmaz çelik veya alaşımlı çelik olabilir

Dimensions & Weight					
NPS	DN	SW	L	H	Wt
inc.	mm	mm	mm	mm	Kg
1/2	15	21,7	73	88	1,6
3/4	20	27,1	80	89	1,8
1	25	33,7	100	110	3
1 1/4	32	42,6	120	140	5,2
1 1/2	40	48,6	120	158	7,8
2	50	61,1	140	190	11

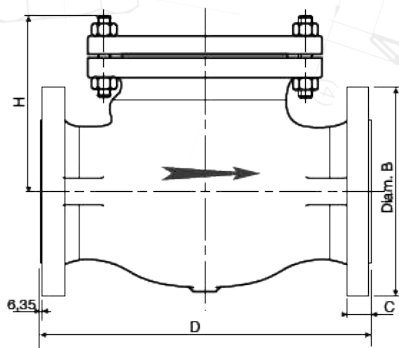


SW



NPT

# 900 / 1500 CLASS FORGED STEEL CHECK VALVES



*swing check valves*

BS 1868 – 1975

distance entre brides / *face-to-face dimension*  
ASME B 16.10 – 1992 ■ API 6D – 1994

brides / *flanged ends*  
ASME B 16.5 – 1996

## 900 CLASS

Dimensions mm

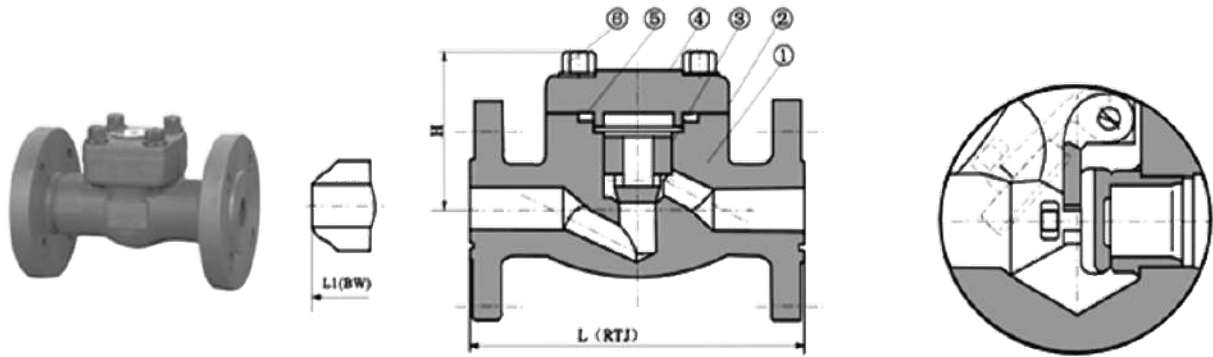
Diamètre / Size		Ø B	C	D(I)	H*
DN	NPS				
50	2	216	44,5	368,3	235
80	3	241	44,5	381,0	260
100	4	292	50,8	457,2	305
150	6	381	62,0	609,6	365
200	8	470	70,0	736,6	415
250	10	546	76,2	838,2	485
300	12	610	85,6	965,2	650
350	14	641	92,2	1028,7	
400	16	705	95,2	1130,3	
450	18	787	107,9	1219,2	
500	20	857	114,3	1320,8	
600	24	1041	146,0	1549,4	

## 1500 CLASS

Dimensions mm

Diamètre / Size		Ø B	C	D(I)	H*
DN	NPS				
50	2	216	44,5	368,3	235
80	3	267	54,1	469,9	275
100	4	311	60,2	546,1	365
150	6	394	89,0	704,9	485
200	8	483	98,3	831,9	540
250	10	584	114,3	990,6	610
300	12	673	130,3	1130,3	765
350	14	750	139,7	1257,3	
400	16	825	152,4	1384,3	
450	18	915	168,4	1536,7	
500	20	985	184,1	1663,7	
600	24	1168	209,5	1943,1	

# 150-300-600 CLASS FORGED STEEL FLANGED CHECK VALVES



Dimensions : mm			Orifice Size	DN	10	15	20	25	32	40	50
			NPS		3/8	1/2	3/4	1	1 1/4	1 1/2	2
ASME B 16.10-92	150	RF		102	108	178*	203,5*	216*	228,5*	266,5*	
		RJ					216*	228,5*	241,5*	282,5*	
	300	RF			152,5	178	203,5	216	228,5	266,5	
		RJ			163,5	190,5	216	228,5	241,5	282,5	
	600	RF			165	190,5	216	228,5	241,5	292	
		RJ			163,5	190,5	216	228,5	241,5	295	
AFNOR NFM 87412 86	ISO PN		20	-	108	117	127	-	165	203	
			50	-	152	178	203	-	229	267	
			100	-	165	190	216	-	241	292	

# CHECK VANA PARÇA LİSTESİ/ CHECK VALVES PART LIST

Part Name Parça Adı	API TRIM NO			İÇ AKSAM		
	1	8	10	5	12	BRONZE
Body	WCB	WCB	WCB	WCB	WCB	WCB
Bonnet	ST	ST	ST	ST	ST	ST
Body Seat Ring	ST	ST	ST	ST	ST	ST
Body Seat Face	Cr13	STL	STL	STL	STL	M
Disc	WCB	WCB	WCB	WCB	WCB	WCB
Disc Seat Face	Cr13	Cr13	316	STL	STL	M
Disc Pin	Cr13	Cr13	316	Cr13	316	Bs
Disc Hinge	WCB	WCB	WCB	WCB	WCB	WCB
Disc Arm	WCB	WCB	WCB	WCB	WCB	WCB
Bolt	St.St	St.St	St.St	St.St	St.St	St.St
Gasket For 150 LB	RF	RF	RF	RF	RF	RF
Gasket For 300 LB	SWG	SWG	SWG	SWG	SWG	SWG
Gasket For 600 LB	SWG	SWG	SWG	SWG	SWG	SWG
Gasket For 800 LB	SWG	SWG	SWG	SWG	SWG	SWG
Stud Bolt	B7	B7	B7	B7	B7	B7
Nut	2H	2H	2H	2H	2H	2H

## Materials Symbols /Malzeme Sembolleri

WCB	ASTM A216 Gr. WCB Cast Steel / Çelik Döküm
Cr13	AISI 420 / AWS 430 Cr.13 Stainless Steel / Paslanmaz Çelik
STL	AWS 13ER CoCr-A (STELLITE)Hard Face / Sert Yüzey Dolgusu
ST	ASTM A105 / ASTM A515 Carbon Steel / Karbon Çeliği
DI	Ductile Iron / Sfero Döküm
Bz	ASTM B148 Aluminium-Bz or Mn-Bz /Aluminyum Bronz veya Mangan Bronz
Bs	ASTM B138M Brass/ Pirinç
B	ASTM A307 B Steel Bolt/ Çelik Cıvata
B7	ASTM A193 Gr.B7 Steel Stud Bolt /B7 Kalite Çelik Saplama
2H	ASTM A194 Gr.2H Steel Nut / Çelik Somun
316	AISI 316 & AWS 316L Stainless Steel /316 Kalite Paslanmaz çelik
GRF	Graphite Ring (98%) / %98 Saflıkta Grafit Ring
RF	Reinforced / Takviyeli Grafit
St.St	Stainless Steel /Paslanmaz Çelik
M	Monel AWS A5.11E NiCu-7 DIN1736 El-NiCu30 Mn
SWG	Spiral Wounded Gasket / Spiral Sarımlı Conta
Galv.	Galvanized / Galvaniz